



Tahiti & the Society Islands

~ Featuring Papeete, Huahine, Taha'a, Bora Bora & Moorea ~

July 23 - August 2/3, 2025

Welcome to Paradise! The islands of French Polynesia are a gorgeous collection of volcanic atolls strewn across the grand Pacific Ocean and the island of Tahiti is the largest of all. Start your dream vacation with a two-night stay in Papeete at the InterContinental Tahiti Resort and Spa. The Resort is located on 32 acres of lush tropical garden alongside an idyllic lagoon. Indulge in a host of activities, from diving amongst coral reefs to taking a swim at the infinity pool or unwinding at the Deep Nature Spa. Enjoy a drink from your private balcony of your spacious panoramic ocean view room facing the lagoon. Explore the best of Tahiti on two included half-day excursions before you embark the M/S Paul Gauguin, one of the finest small boutique ships at sea. Voted most luxurious ship to sail in Tahiti on a year-round basis, your Paul Gauguin ship is designed to dazzle. Along with the incredible beauty of the South Pacific you will be treated to all shipboard meals in your choice of venue, included beverages, in room fridge replenished daily with soft drinks, beer, and water, entertainment including local Polynesian performers, complimentary watersports including kayaking and paddle boarding, use of the secluded, white-sand beach in Bora Bora, and a day on Gauguin's private island, Motu Mahana!

July 23 & 24 | Here we go! - Board your flight today for Los Angeles or San Francisco and connect to your flight to Papeete, Tahiti. Depending on flight schedules you'll arrive either late on July 23 or early on July 24. On arrival you'll be met by your Universal Travel Tour Director and assisted with your transfer to your hotel. The hotel owns two private freshwater horizon pools, one with a sand-bottom and a swim-up bar. A lagoonarium of its own is available too for the snorkeling fan. It is Tahiti's most famous Resort and one of the island's only two 5-star properties, with amazing views over the island of Moorea, just in front of it. The remainder of the day is at your leisure to rest in your upgraded, spacious, and panoramic ocean view balcony room, your beautiful home for the next two nights. Tonight meet your fellow travelers for a welcome to Tahiti dinner.

Overnight: InterContinental Tahiti Resort & Spa (D)

July 25 | Downtown Papeete - Meet your local tour guide this morning for a private half-day tour. Visit downtown Papeete, the Capital of French Polynesia. The name Papeete means "water from a basket". Visit the local market and surrounding shopping area. You will be greeted by a Polynesian Dance group with the sounds of the conch shell, Marquisian drums, guitars & ukuleles. See local artists demonstrating their skills of weaving, wood carving, pareo painting/dying. Sample traditional food including "poisson cru" (fresh tuna ceviche marinated with lemon and coconut milk and some crudities). It will be a great introduction to the Polynesian lifestyle and joyful culture. Return to the hotel early this afternoon to relax and enjoy the resort.

Overnight: InterContinental Tahiti Resort & Spa (B)

July 26 | Sail away from Papeete! - After your leisurely breakfast this morning your local guide awaits you for another half-day tour of the island. Travel westbound this

morning and your first stop will be the Museum of Tahiti and the Islands, considered to be one of the best and most beautiful museums in the South Pacific. Next you will visit Arahura marae, an ancient cult center. Here you will learn about the ancestral Ma'ohi religion and culture. Continue your tour to Maraa'a Fern Grotto and later you will visit the Vahipahi Tropical Gardens, before transferring to the pier to board the incredible M/S Paul Gauguin! You'll arrive in time for a late lunch and will have the entire evening to discover what makes the M/S Paul Gauguin the award winner that it is! The ship underwent an refurbishment in March of 2021. Tonight choose one of the three restaurants for dinner and relax in the piano bar. Your ship sets sail at midnight.

(B,L,D)

July 27 | Huahine, Society Islands - Your first port of call is Huahine, known as "The Garden Island" for its lush rainforests and dramatic terrain. While here, you can cruise the expansive lagoon, explore the island's culture, or have a romantic picnic on the beach.

(B,L,D)

July 28 | Taha'a Mount Mahana, Society Islands

Embark on your choice of exciting shore excursions today, or spend your whole day relaxing on Motu Mahana, Gauguin's private islet. Enjoy swimming, snorkeling, and kayaking, or simply lounge on the beach with drinks served in coconuts, and a floating lagoon bar. Les Gauguines will also be on hand to provide musical entertainment & demonstrate traditional Polynesian crafts. Enjoy a delicious BBQ lunch at the beach or relax on your balcony and soak in the breathtaking island views!

(B,L,D)

July 29 & 30 | Bora Bora, Society Islands!

Immediately recognizable by Mount Otemanu rising from the ocean, this half atoll, half mountain is surrounded by a spectacular lagoon and a series of smaller islands. Ancient



Polynesians called it Parapora, or “firstborn” because they thought it was the first island created after Raiatea. The ship anchors for an overnight stay. (B,L,D)

July 31 & August 1 | Moorea, Society Islands

Vibrant colors abound on Moorea, in everything from fresh fruits and flowers to multi-hued lagoons, from spectacular mountain peaks to palm-fringed beaches. You may shop for local handicrafts, embark on an optional dolphin watching expedition with a marine biologist, and sample the local pineapples, said to be the most delicious in all of French Polynesia! Tonight you return to Papeete (B,L,D)

August 2/3 | Papeete, Tahiti & flight back home

After disembarking the ship this morning, board your

motorcoach and journey to the East Coast to admire the volcanic coastal scenery at Tahara lookout. Next, travel to Bay of Matavai, where Captain Wallis discovered Tahiti. Continue your journey to the Faarunai waterfalls and Arahoho Blowhole, one of the island’s most visited natural wonders. On your way back you will stop at a local restaurant for an included lunch. This afternoon a dayroom awaits for your convenience. Repack and relax at the pool once again before you transfer to the airport for your overnight flight. Fond memories of Polynesia will last a lifetime! (B,L)

**itinerary is subject to change*

Inclusions:

- Roundtrip transfer to the Sioux Falls airport
- Round trip airfare from Sioux Falls to Tahiti (except baggage fees)
- 2 or 3 night pre stay in Papeete (depending on the air schedule), at a 5-star resort in panoramic lagoon view rooms
- All transfers while in Papeete
- 2 or 3 full American Breakfast at the hotel
- Portage of one suitcase per person
- One welcome to Tahiti dinner
- 3 half day tours in Tahiti (incl. driver & guide gratuities)
- 7 nights onboard the m/s Paul Gauguin
- Onboard gratuities for room stewards, dining and bar staff
- All shipboard meals, in your choice of venues
- Complimentary 24-hour room service
- Complimentary beverages, incl. select wines, spirits, beers, soft drinks, bottled water, and hot beverages served throughout the ship
- In-room refrigerator replenished daily with soft drinks, beer, and bottled water
- Watersports, including complimentary kayaking and paddle boarding from our marina or destination beaches
- 1 Post Day-Room in Papeete (run of the house)
- Service of a Tour Director
- \$100.00 per person Shipboard Credit

Contact Fran Rietveld

605.995.7910

frietveld@firstdakota.com

First Dakota National Bank

1712 N Main Street
Mitchell, SD 57301

\$650.00 deposit due
when making a reservation

\$300.00 non-refundable at the time of sign up
An additional 30% of the trip cost in your selected cabin, is due on or before Jan 10, 2025

Final payment due Mar 3, 2025

Cancellation Penalties:

50% non refundable Mar 4, 2025
100% non-refundable Apr 22, 2025



Two Porthole Window - Cat. F | 200sqft
\$9,499.00 per person

Picture Window - Cat. E | 200sqft
\$9,999.00 per person

Balcony - Cat. D | 202sqft + 37sqft
\$11,599.00 per person

Balcony - Cat. C | 202 sqft + 37sqft
\$11,899.00 per person

Veranda - Cat. B | 249 sqft + 56 sqft
\$13,599.00 per person

Veranda Suite - Cat. A | 300 sqft + 58 sqft
\$15,899.00 per person

Single occupancy is available upon request



A valid passport is required for this itinerary and must be valid for at least 6 month after returning back to the USA.

An optional Travel Protection plan is available with coverage for trip cancellation/interruption, see enclosed product flyer for more information.

Optional, limited upgrade to an Overwater Bungalow on your pre-cruise in Papeete available upon request



Cash or Check payments only

Universal Travel will offer Optional and Private Shore Excursions on all Ports of Call on this Itinerary.

M/S Paul Gauguin Ship - Facts



Capacity: 330 guests
Crew: 217/International
Crew-to-Guest Ratio: 1:1.5
(one of the highest of any luxury cruise ship)
Length: 504 feet
Width: 72 feet
Draft: 17.1 feet
Tonnage: 19,200 tons
Maximum speed: 18 knots
Passenger decks: 7

- All Oceanview accommodations, nearly 70% with balconies, measuring from 200 to 500 sq. ft.
- 166 suites/staterooms on Decks 3-8, including one wheelchair-accessible stateroom and select staterooms that can accommodate three guests/ Cabin B and up: Butler service, in-suite bar setup, and iPod® music system in suite/stateroom
- A choice of three dining venues
- Complimentary 24-hour room service, including selections from L'Etoile restaurant during regular dining hours
- Complimentary beverages, including select wines and spirits, beer, soft drinks, bottled water, and hot beverages
- In-room refrigerator replenished daily with soft drinks, beer, and bottled water
- Onboard gratuities for room stewards, dining and bar staff
- Full entertainment program including Polynesian artists, musical entertainment, a pianist, and a professionally operated casino with slot machines
- Spa and beauty services, including hand and foot treatments, body treatments, facials, and spa programs
- Optional PADI SCUBA diving program and certification
- Watersports marina for complimentary kayaking and paddle boarding, and Zodiacs® for optional dive excursions
- A day at Motu Mahana, Paul Gauguin Cruises' exclusive retreat off the coast of Taha'a, featuring Polynesian hospitality, snorkeling, watersports, bar service, and a delicious feast
- Access to the exclusive, private beach located on a motu off the coast of Bora Bora, which offers an idyllic white-sand beach, excellent snorkeling, and bar service on French Polynesia itineraries
- Fully-equipped fitness center
- Presentations by local naturalists and a variety of special guests
- Spacious outdoor decks and a pool
- La Boutique duty-free shop
- Book library (open 24 hours a day)
- Wi-Fi hot spots throughout the ship to cover most staterooms and common areas, as well as guest-accessible computers, available 24 hours a day for a nominal fee
- Laundry services available
- Certified medical services



Weather

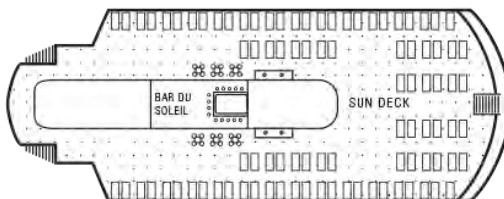
July is the best month to visit French Polynesia. The daily temperatures in July reach pleasant low 80's °F. The seawater temperature reaches ideal 80 °F. At night, temperatures hover around a pleasant 71 °F.

- Denotes room with two twin beds that convert to a queen.
- + Denotes stateroom with triple occupancy.

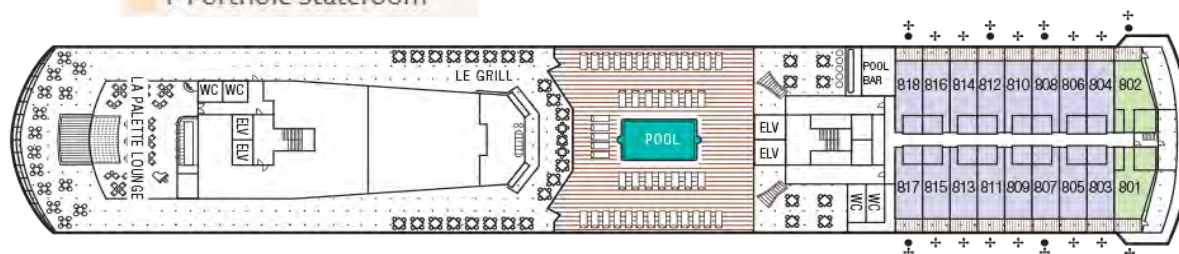
Paul Gauguin

CRUISES

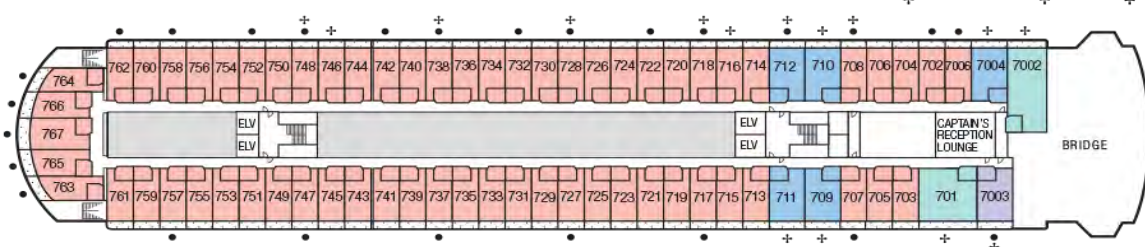
- Owner's Suite 701
- Owner's Suite 7002
- CS Grand Suite
- A Veranda Suite
- B Veranda Stateroom
- C Balcony Stateroom
- D Balcony Stateroom
- E Window Stateroom
- F Porthole Stateroom



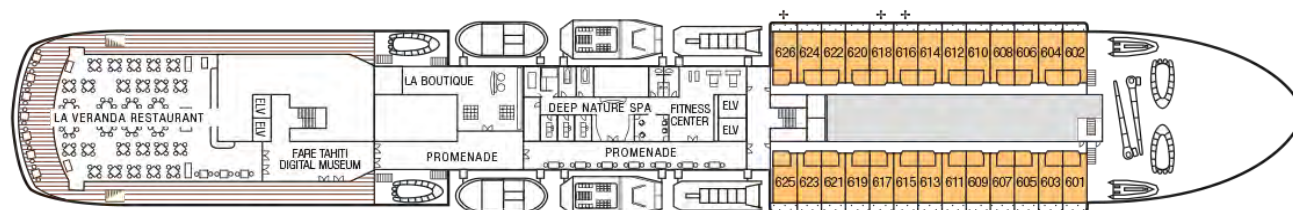
Deck 9



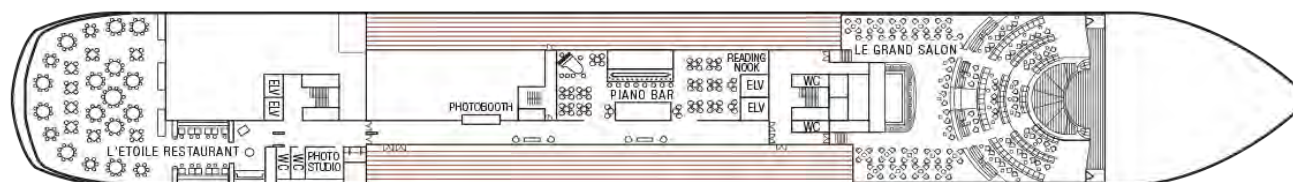
Deck 8



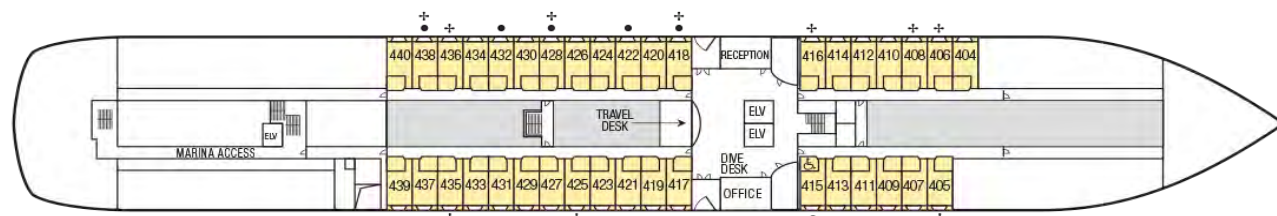
Deck 7



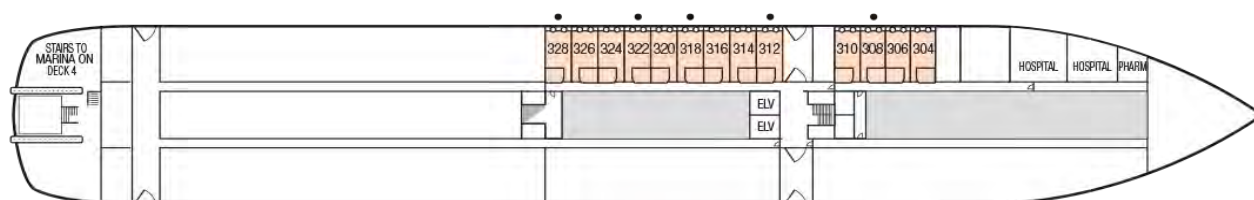
Deck 6



Deck 5



Deck 4



Deck 3

**UPGRADE to Overwater Lagoon Bungalow while at the Intercontinental Hotel
in Papeete (pre-cruise only) : \$875.00 per person**

ONLY TWO Bungalow's with two beds available!



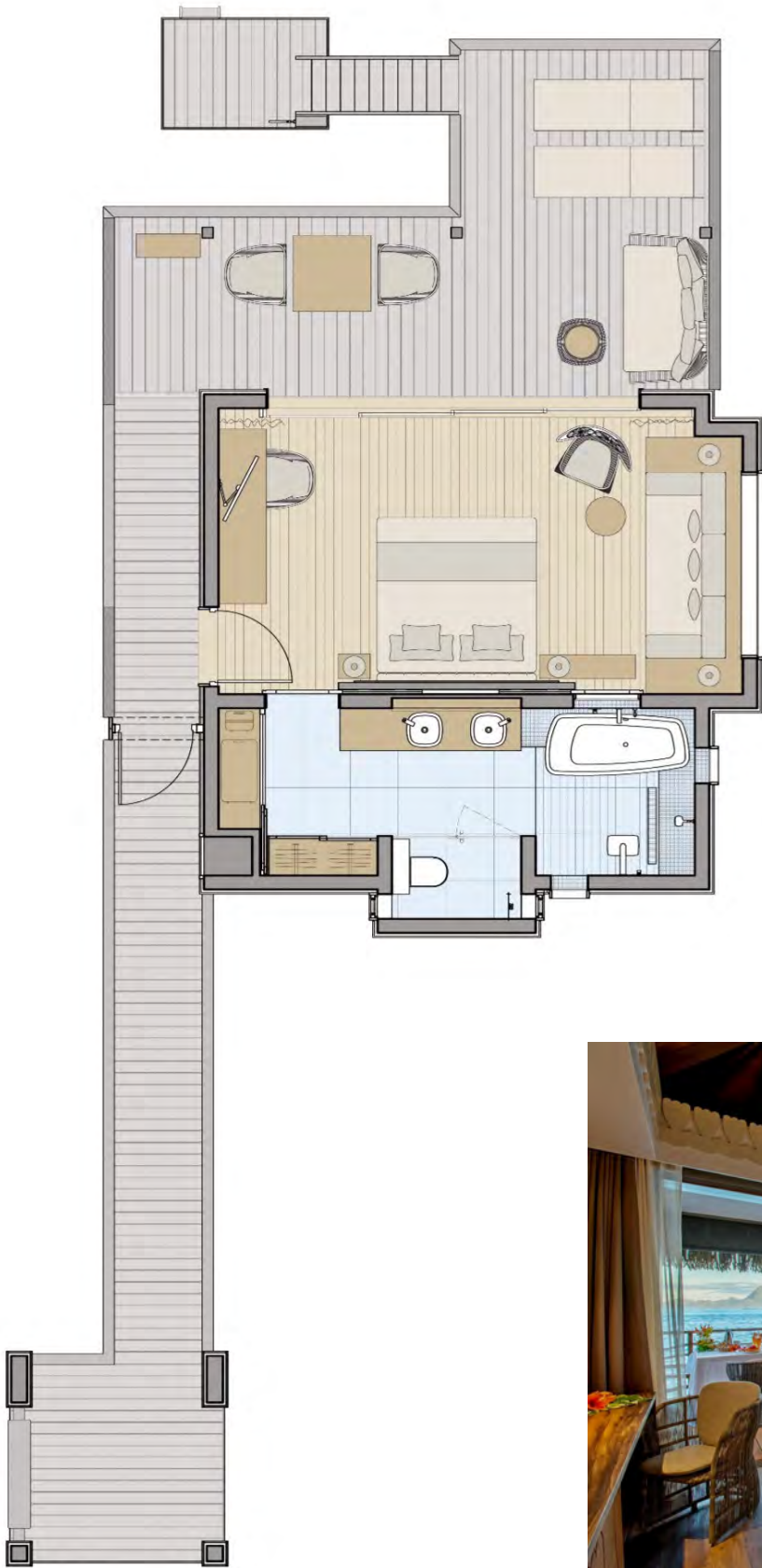
Overwater lagoon bungalow

Total square meter: 50.5 m² (38.5 m² inside bungalow + 12 m² terrace).

Total square feet: 544 Sq Ft (415 Sq Ft inside bungalow + 129 Sq Ft terrace).

**UPGRADE to Overwater MOTU Bungalow while at the Intercontinental Hotel
in Papeete (pre-cruise only): \$995.00 per person**

MOTU Bungalow's are equipped with KING bed's only



Bungalow Motu

Total square meter: 69 m² (37 m² room + 32 m² Terrace).
Total square feet: 743 Sq Ft (286 Sq Ft room + 344 Sq Ft).



Group tours are an exciting way to explore the world, and a Travelex travel protection plan can help ensure that you stay safe during your next tour. Our 360° Group Premier plan provides maximum travel protection for all ages at competitive group rates. Benefits include trip cancellation and interruption, emergency medical coverage, and 24/7 travel assistance services.



360° Group Premier | Group Travel Protection

Plan highlights

- Trip cancellation/interruption benefit includes:
 - Sickness, injury, or death¹
 - Inclement weather & natural disasters
 - Financial insolvency² & labor strike
 - Involuntary unemployment
- Primary coverage, no deductibles³
- Medical evacuation
- 5-hour travel delay benefit
- 3-hour missed connection benefit
- 12-hour baggage delay benefit
- Fast online claims⁴

360° Group Premier plan rates³

Trip cost	0-59	60-74	75+
\$0	\$36	\$47	\$64
\$1 - \$250	\$44	\$58	\$81
\$251 - \$500	\$57	\$74	\$105
\$501 - \$1,000	\$86	\$114	\$168
\$1,001 - \$1,500	\$109	\$143	\$211
\$1,501 - \$2,000	\$149	\$191	\$215
\$2,001 - \$2,500	\$191	\$245	\$277
\$2,501 - \$3,000	\$234	\$300	\$338
\$3,001 - \$3,500	\$276	\$354	\$400
\$3,501 - \$4,000	\$319	\$409	\$461
\$4,001 - \$4,500	\$361	\$463	\$523
\$4,501 - \$5,000	\$404	\$518	\$584
\$5,001 - \$5,500	\$446	\$572	\$646
\$5,501 - \$6,000	\$489	\$627	\$707
\$6,001 - \$6,500	\$531	\$681	\$769
\$6,501 - \$7,000	\$574	\$736	\$830
\$7,001 - \$8,000	\$638	\$818	\$923
\$8,001 - \$9,000	\$723	\$927	\$1,046
\$9,001 - \$10,000	\$808	\$1,036	\$1,169
\$10,001 - \$11,000	\$893	\$1,145	\$1,292
\$11,001 - \$12,000	\$978	\$1,254	\$1,415
\$12,001 - \$13,000	\$1,063	\$1,363	\$1,538
\$13,001 - \$14,000	\$1,148	\$1,472	\$1,661
\$14,001 - \$15,000	\$1,233	\$1,581	\$1,784
\$15,001 - \$16,000	\$1,318	\$1,690	\$1,907
\$16,001 - \$17,000	\$1,403	\$1,799	\$2,030
\$17,001 - \$18,000	\$1,488	\$1,908	\$2,153
\$18,001 - \$19,000	\$1,573	\$2,017	\$2,276
\$19,001 - \$20,000	\$1,658	\$2,126	\$2,399

360° Group Premier plan benefits³

Benefits	Coverage
Trip cancellation	100% of trip cost (up to \$20,000)
Trip interruption	150% of trip cost (up to \$30,000)
Trip interruption—return air only ⁵	\$1,000
Travel delay	\$1,000 (\$250/day)
Missed connection	\$1,000
Baggage & personal effects	\$1,500
Sporting equipment delay ³	\$600
Baggage delay	\$250
Emergency medical expenses ⁶	\$50,000
Emergency dental expenses ⁶	\$500
Emergency evacuation & repatriation	\$250,000
Accidental death & dismemberment	\$10,000
Travel assistance services ⁷	Included

¹Of you, a traveling companion, family member, or business partner. ²Coverage when plan is purchased at or before the final trip payment. ³All coverage per insured up to the limits listed. Pre-existing medical conditions waiver may vary by state. Coverages may vary and may not be available in all states. Please see the policy for details, or call +1.888.574.7026. Rates are subject to change. ⁴Based on industry average. Fastest payment on approved claims is based on electronic payment of claim. ⁵Coverage for trip interruption and trip interruption—return air only cannot be combined. ⁶\$50 deductible in CT, IN, KS, MO, MT, VT, and WA. ⁷Provided by the designated provider listed in the policy. 10.23 GRPFLY3





Questions about plan benefits?

Call +1.888.574.7026 and use Plan GPZ-1023, or email 360Group@travelexinsurance.com.

Trip cancellation & trip interruption

Protect travel investments and recover nonrefundable prepaid costs if your trip is canceled or interrupted for a covered reason. Popular covered reasons include:

- Sickness, injury, or death¹
- Residence or destination uninhabitable
- Strike
- Inclement weather
- Cancel for business reasons
- Traffic accident en route
- Quarantine
- Jury duty/subpoena
- Military duty
- Financial insolvency²
- Terrorist incident
- Theft of passport/visa
- Involuntary termination

Travel delay

Reimbursement for reasonable additional costs — such as accommodations, local transportation, and meals — if travel is delayed five hours or longer.

Baggage & personal effects

Reimbursement for personal articles and expenses if bags are lost, stolen, or damaged.

Baggage delay

Reimbursement for reasonable additional personal articles and expenses if bags are delayed for 12 hours or more.

Emergency medical & dental expenses⁶

Emergency medical treatment if sickness or injury occurs while traveling.

Emergency medical evacuation

Includes emergency medical evacuation to the nearest suitable medical facility, help returning home if medically necessary, and repatriation expenses.

Accidental death & dismemberment

Reimbursement for permanent loss of life, limbs, or sight from a covered accidental injury during travel.

Pre-existing medical condition exclusion waiver³

Pre-existing medical conditions are eligible for coverage when:

- The traveler is medically able to travel at the time of plan purchase
- The plan is purchased at or before the final trip payment

A pre-existing condition is an injury, sickness, or other condition (excluding any condition from which death ensues) of an insured, traveling companion, or family member traveling with the insured within the 60-day period immediately preceding the insured's plan purchase date.

Plan details

View policy at policy.travelexinsurance.com/GPZ-1023

Unless otherwise stated in the plan, this plan will not pay for any loss arising directly or indirectly out of, or as a result of, or from, or that occur to, or are as a result of the actions of, the insured or the insured's family member, or traveling companion, or business partner for the following: suicide, attempted suicide, or intentionally self-inflicted injury, while sane or insane (while sane in CO and MO); mental, nervous, or psychological disorders; being under the influence of drugs or intoxicants, unless prescribed by a physician; normal pregnancy, resulting childbirth, and elective abortion; participation as a professional in athletics while on a covered trip; participation in organized amateur or interscholastic athletic or sports competition or related practice events; riding or driving in any motor competition; off-road driving, whether as a driver or as a passenger; declared or undeclared war, or any act of war; civil disorder; service in the armed forces of any country; nuclear reaction, radiation or radioactive contamination; operating or learning to operate any aircraft, as pilot or crew; mountain climbing, bungee jumping, snow skiing, skydiving, parachuting, free falling, cliff diving, B.A.S.E. or base jumping, hang gliding, parasailing, travel on any air-supported device other than on a regularly scheduled airline or air charter company, or extreme sports; mountaineering where ropes or guides are commonly used including ascending and descending a mountain requiring specialized equipment, including but not limited to anchors, bolts, carabiners, crampons, lead/top-rope anchoring equipment and pick-axes; scuba diving if the depth of the water exceeds 75 feet; the insured's commission of or attempt to commit a felony; elective medical or holistic treatment or procedures; failure of any tour operator, common carrier, other travel supplier, person or agency to provide the bargained-for travel arrangements/services; a loss that results from a sickness, disease, or other condition, event, or circumstance that occurs at a time when this policy is not in effect for the insured; a diagnosed sickness (if insurance is purchased after such diagnosis) from which no recovery is expected and that only palliative treatment is provided and that carries a prognosis of death within 12 months of the effective date of the applicable coverage under this policy; sickness, injury or death if the plan is purchased after entering a hospice facility or receiving hospice treatment; any trip taken outside the advice of a physician; or a pre-existing medical condition, including death, that results therefrom (within the stated look-back period within your insurance policy). Additionally, this plan will not pay for any loss arising directly or indirectly out of, or as a result of, or from, or that occur to, or are as a result of the actions of, the following that occur to the insured: any amount paid or payable under any worker's compensation, disability benefit or similar law; a loss or damage caused by detention, confiscation, or destruction by customs; or medical treatment during a covered trip, or arising from a covered trip undertaken for the purpose or intent of securing medical treatment. The following additional exclusion applies to accidental death and dismemberment benefits: We will not pay for loss caused by or resulting from sickness of any kind. Please refer to your plan documents for a complete list of plan exclusions and limitations, as well as the definitions of capitalized terms used herein. The purchase of this product is not required in order to purchase any other travel product or service. Your travel retailer might not be licensed to sell travel insurance and will only be able to provide general information about the product. An unlicensed travel retailer may not answer questions about the terms and conditions of the insurance offered and may not evaluate the adequacy of your existing insurance coverage. The products offered provide insurance coverage that only applies during your covered trip. You may have insurance coverage from other sources that provide similar benefits but may be subject to different restrictions depending on the coverage. You may wish to compare the terms of the travel policy offered through Travelex with any existing life, health, home, and automobile insurance policies you may have. If you have questions about your coverage under your existing insurance policies, contact your insurer or insurance agent or broker. Any inquiry regarding claims may be directed to Zurich Travel Assist at claims@zurichtravelassist.com, P.O. Box 968019, Schaumburg, IL 60196-8019; +1.800.501.4781. Inquiries regarding new, existing, or denied claims and any other claims questions may also be directed to this address. Consumers in California may also contact the California Department of Insurance Hotline +1.800.927.4357 or +1.213.897.8921. Travelex Insurance Services, Inc. CA Agency License #0D10209. Consumers in Maryland may contact the Maryland Insurance Administration +1.800.492.6116 or +1.410.468.2340. Insurance coverages underwritten by Zurich American Insurance Company, a New York domiciled company with its principal place of business at 1299 Zurich Way, Schaumburg, IL 60196 (NAIC # 16535). The terms and conditions of the policy described in this brief summary are governed by the individual policy document that contains the complete terms. In the event of any discrepancy between the information in this brief summary and the policy, the policy document shall govern. This is intended as a general description of certain types of insurance available to qualified customers, provided solely for informational purposes. Policy Form Series #U-TIIV-100-A CW, #U-TIIN-100/110-A CW, #U-TIGV-100-A CW, #U-TIGV-100-A CW; in DC #U-TIIV-100-A DC & #U-TIGV-100-A DC; in IN #U-TIIN-100/110-A IN & #U-TIGV-100-A IN; in KS #U-TIIN-110-A KS; in MN #U-TIIV-100-B MN & #U-TIGV-100-B MN; in MO #U-TIIN-110-A MO; in MT #U-TIIN-100/110 MT & #U-TIGV-100-A CW; in NH #U-TIIV-100-A NH; #U-TIIV-101-B NY, #U-TIIN-100 NY; in OR #U-TIIV-100-A OR; in VA #U-TIIV-100-A VA and #U-TIGV-100-A VA; in VT #U-TIIN-100/110-A VT. 10.23 GRPFLY3



Dream. Explore. Travel On.

This waiver must be read and signed before your tour reservation is accepted.

GENERAL DISCLAIMER: UNIVERSAL TRAVEL and its affiliated entities (acting through and its and their employees, shareholders, officers, directors, successors, agents, and assigns), does not own, operate or supervise any person or entity which is to or does provide goods or services for these trips. UNIVERSAL TRAVEL does not maintain control or operate the personnel, equipment, or operations of the suppliers it uses and as such UNIVERSAL TRAVEL assumes no responsibility for and disclaims any and all liability for any personal injury, death, property damage or other loss, accident, delay, inconvenience, or irregularity which may be occasioned by reason of: (1) any wrongful, negligent, willful or unauthorized acts or omissions on the part of any of the third party suppliers or other employees or agents, (2) any defect in or failure of any vehicle, equipment, or instrument owned, operated or otherwise used by any of these third party suppliers, or (3) any wrongful, willful or negligent act or omission on the part of any other party not under the supervision and control of UNIVERSAL TRAVEL. Additionally, UNIVERSAL TRAVEL disclaims and does not accept any responsibility for losses or expenses due to sickness, lack of appropriate medical facilities or practitioners, weather, strikes, theft or other criminal acts, war, terrorism, computer problems, or other such causes. All services and accommodations are subject to the laws of the country in which they are provided. UNIVERSAL TRAVEL reserves the right to make changes in the published itinerary whenever, in its sole judgment, conditions warrant, or if UNIVERSAL TRAVEL deems it necessary for the comfort, convenience, or safety of the tour. UNIVERSAL TRAVEL reserves the right to withdraw any tour announced. UNIVERSAL TRAVEL reserves the right to decline to accept any person as a member of the tour, or to require any participant to withdraw from the tour at any time, when such action is determined by the tour manager to be in the best interests of the health, safety, and general welfare of the tour group or of the individual participant. Neither does UNIVERSAL TRAVEL accept liability for any carrier's cancellation penalty incurred by the purchase of a nonrefundable airline or other ticket to the tour departure city and return or otherwise. Baggage and personal effects are the sole responsibility of the owner at all times. Participants may be photographed for the promotional purposes of UNIVERSAL TRAVEL. Payment of the deposit to UNIVERSAL TRAVEL constitutes acceptance of these terms and conditions.

ASSUMPTION OF RISK: By contracting with Universal Travel, clients unconditionally and irrevocably agree to assume any and all risk associated with COVID-19. The client expressly releases Universal Travel of and from any and all claims, losses, damages, and expenses that any clients or related parties may suffer or incur if they become infected with or exposed to COVID-19 while traveling. Additionally, clients agree to familiarize themselves with local legislation and restrictions regarding COVID-19 and follow as written while traveling with Universal Travel.

ARBITRATION: The Customer agrees that any dispute concerning, relating, or referring to this contract, the brochure or any other literature concerning my trip, or the trip itself, shall be resolved exclusively by binding arbitration according to the then existing rules of the American Arbitration Association. Such proceedings will be held in and governed by the substantive law of Arkansas. The arbitrator and not any federal, state, or local court or agency shall have exclusive authority to resolve any dispute relating to the interpretation, applicability, enforceability, conscionability, or formation of this contract, including but not limited to any claim that all or any part of this contract is void or voidable.

Customer name: _____

Customer signature: _____ Date: _____



Trip Registration

Please complete this reservation form (one per person) and mail it with your deposit check plus the **travel insurance premium, if desired**, to:

First Dakota National Bank
Attn: Fran Rietveld
1712 N Main Street
Mitchell, SD 57301

Please print LEGIBLY

Name and Date of Trip: _____

Full legal name (as it appears on your passport): _____

Gender: ____Male ____Female Date of Birth (month/day/year)_____

Familiar name or nickname: _____

Street address: _____

City/State/Zip: _____

Phone number (with area code): Home Phone: _____ Cell Phone: _____

Email address: _____

Emergency Contact (Do not use spouse if they are traveling with you): _____

Relationship: _____ Cell Phone: _____

Your roommate's name, if applicable: _____

Please note if you require a special diet: _____

Please indicate your bedding preference: ____King Bed or ____Two Beds

(King bed cannot be guaranteed)

Please note if your anniversary or birthday occur during the tour: _____

Do you need wheelchair assistance at the airports? _____

Airline Frequent Flyer Number: _____ Known Traveler Number (KTN): _____

Please note: Credit cards may be used and will incur a 4% handling fee

Travel Protection is being offered as an optional add-on.

☐ I ACCEPT the optional travel protection plan. I agree Universal Travel is not liable for any losses, financial or otherwise.

☐ I DECLINE the optional travel protection plan and in doing so realize that I may lose all or part of my trip payment if I have to cancel after the penalty date noted on the trip flyer. I also realize that I will be 100% responsible for all expenses incurred due to cancelled or delayed flights; if I become sick, injured, or die while on the trip; or if I must leave the tour to return home. I will also not have coverage for lost or damaged luggage, additional lodging or meals if delayed or for any unused portion of the tour. I agree Universal Travel is not liable for any losses, financial or otherwise

Customer name: _____

Customer signature: _____ Date: _____